

**20
PAS 24**

 **SUSTAINABLE POPULATION
& DEVELOPMENT IN A NEW ERA**

Population Association of Singapore 2024 Annual Meeting

Jointly Hosted with NUS Centre of Family and Population Research

16-17 May 2024

PROGRAMME E-BOOKLET

Updated 15 May 2023



GUEST OF HONOUR



Minister Indranee Rajah

Minister in the Prime Minister's Office
Second Minister for Finance
Second Minister for National Development

Ms. Indranee Rajah, is a Minister in the Prime Minister's Office, Second Minister for Finance since 2018, as well as Second Minister for National Development and Leader of the House since 2020. In the Prime Minister's Office, Ms Rajah oversees the National Population and Talent Division and assists Senior Minister Teo Chee Hean on population matters.

Ms Rajah has been the Member of Parliament for the Tanjong Pagar Group Representation Constituency (GRC) since 2001. She was in practice as a lawyer and Senior Counsel before joining the Government.

KEYNOTE SPEAKER



Professor Wolfgang Lutz

Deputy Director General for Science at International Institute for Applied System Analysis
Founding Director, Wittgenstein Centre for Demography and Global Human Capital

[Can Investments in Human Capital Compensate for Low Fertility? The Power of Multi-Dimensional Demography](#)

Wolfgang Lutz is the Interim Deputy Director General for Science for International Institute for Applied Systems Analysis (IIASA). In addition to the various roles he has filled at IIASA over the years, Lutz is the Founding Director of the Wittgenstein Centre for Demography and Global Human Capital, a cooperation between IIASA, the University of Vienna, and the Austrian Academy of Sciences.

Professor Lutz is a leading academic in the field of population and sustainable development and was one of the scientists appointed by the UN to write the Global Sustainable Development Report 2019 'The Future is Now'. He has won numerous prestigious awards including the Wittgenstein Prize, two European Research Council (ERC) Advanced Grants, the Mattei Dogan award of the International Union for the Scientific Study of Population (IUSSP), and most recently, the Science Prize of the Austrian Research Association. He is a member of the Austrian Academy of Sciences, the German National Academy Leopoldina, the US National Academy of Sciences (NAS), the World Academy of Sciences (TWAS), the Finnish Society for Sciences and Letters, and the Academia Europaea. He serves as special advisor to the Vice-President of the European Commission Dubravka Suica.

He has published over 293 scientific articles and chapters in refereed books, including 24 in Science, Nature, and PNAS, wrote or edited 27 books and special issues, on international population trends with a special focus on population forecasting, population-development-environment interactions, and on introducing education. He holds a PhD in Demography from the University of Pennsylvania, USA.

KEYNOTE SPEAKER



Dr Sabine Henning

Chief, Sustainable Demographic Transition Section,
Social Development Division, United Nations
Economic and Social Commission for Asia and the
Pacific (UNESCAP)

[Asia and the Pacific at A Crossroads – Challenges and Opportunities of Demographic Change for Inclusive and Sustainable Societies](#)

Sabine Henning is the Chief for the Sustainable Demographic Transition Section, Social Development Division, United Nations Economic and Social Commission for Asia and the Pacific (UNESCAP), Bangkok, Thailand. She currently leads work on population and development issues, focusing on research, capacity-building and intergovernmental support on population dynamics, ageing, migration, and youth.

From 2015-2018, Ms. Henning was Senior Population Affairs Officer and Chief, Office of the Director, Population Division, Department of Economic and Social Affairs (UNDESA), United Nations, New York, advising the Director, overseeing personnel and programme management, and serving as focal point for the annual sessions of the Commission on Population and Development.

From 2000 to 2015, she served successively in the Population Division's Population Estimates and Projections Section, the Population and Development Section, the Migration Section, and the Population Policy Section. She has been involved in UN interagency work and coordination for over 15 years. In addition to publishing in peer-reviewed journals, she was principal author of UNDESA's two-volume Compendium of Recommendations on Population and Development and contributed to three revisions each of UNDESA's flagship publications World Population Prospects and World Urbanization Prospects, also to the biennial migrant stock estimates, reports of the Secretary-General on population and development and migration and development and other UN reports. She frequently represented the UN Secretariat at international conferences and serviced numerous intergovernmental meetings and high-level events at UN Headquarters dealing with population, migration, and development issues.

Ms. Henning has a Ph.D. in Geography with a doctoral-level certificate in Demography from the University of Colorado at Boulder, and a graduate-level certificate in Strategic Management from Harvard University.

ORGANIZERS

PAS

Population Association of Singapore



Centre for Family and Population Research
Faculty of Arts & Social Sciences

PARTNER



Tsao Foundation
Longevity is Opportunity

SPONSORS

OUE



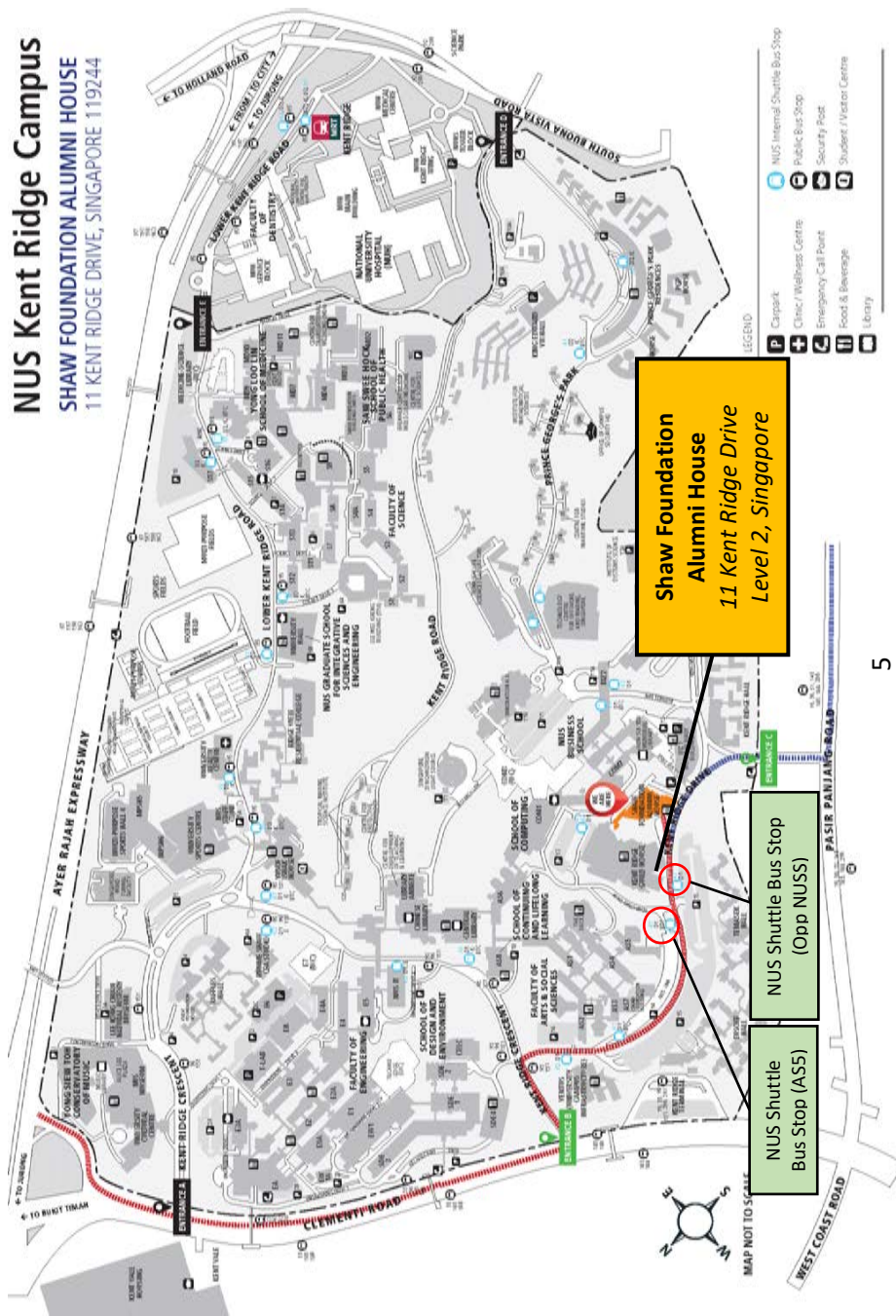
ISEAS PUBLISHING

SPRINGER NATURE

Anonymous Donors

NUS MAP

NUS Kent Ridge Campus SHAW FOUNDATION ALUMNI HOUSE 11 KENT RIDGE DRIVE, SINGAPORE 119244

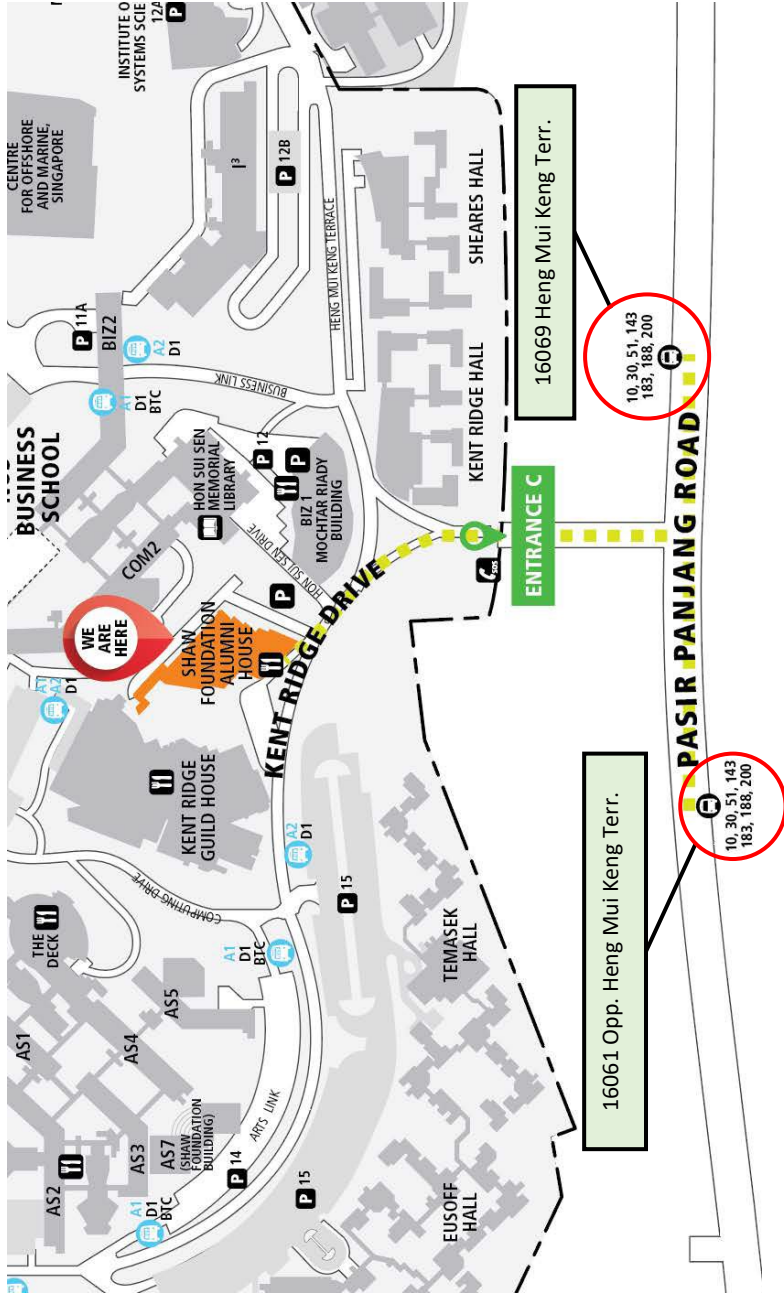


Shaw Foundation Alumni House
11 Kent Ridge Drive
Level 2, Singapore

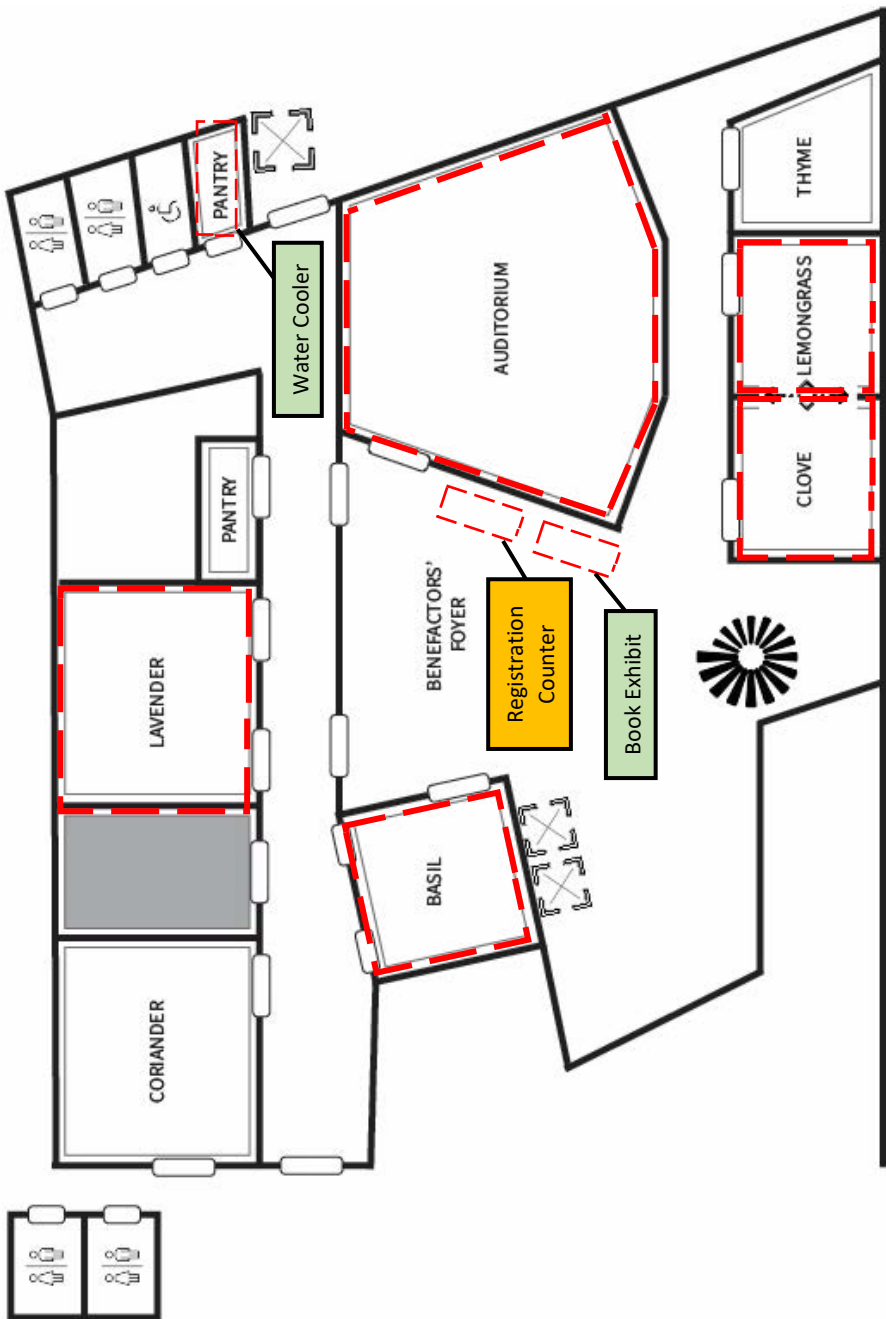
NUS Shuttle Bus Stop (Opp NUS)

NUS Shuttle Bus Stop (AS5)

NUS MAP



VENUE FLOOR PLAN (LEVEL 2)



PROGRAMME COMMITTEE

Committee Co-Chairs

Bussarawan TEERAWICHITCHAINAN (NUS)

Vincent CHUA (NUS)

Qiushi FENG (NUS)

Wei-Jun Jean YEUNG (NUS)

Committee Members

Jeofrey Bautista ABALOS (NUS)

Shannon ANG (NTU)

Cheng CHENG (SMU)

Premchand DOMMARAJU (NTU)

HU Shu (SUSS)

Jeremy LIM-SOH (Duke-NUS)

LIU Haoming (NUS)

Rahul MALHOTRA (Duke-NUS)

Maznah Binti MOHMAD (NUS)

MU Zheng (NUS)

Paul ONG (Tsao Foundation)

TAN Poh Lin (NUS)

THANG Leng Leng (NUS)

Kriti VIKRAM (NUS)

Abhijit VISARIA (Duke-NUS)

Senhu WANG (NUS)

CONFERENCE SECRETARIAT

Joyous TAN (PAS)

SYED Rabia (CFPR)

Nurlinahwati Binte MUHAMAD NUR (CFPR)

PROGRAMME OUTLINE

Day 1: Thursday, 16 May 2024

Time	Details	Venue
8:00 - 9:00	Registration Book Exhibit	2F Foyer
9:00 - 10:00	<p>Opening & Welcome Emcee: Dr Tan Poh Lin Secretary, Population Association of Singapore Prof Wei-Jun Jean Yeung President, Population Association of Singapore A/Prof Bussarawan Teerawichitchainan Co-Director, NUS Centre for Family and Population Research</p> <hr/> <p>Speech by Minister Indraneel Rajah Minister in the Prime Minister's Office Second Minister for Finance Second Minister for National Development</p> <p>Presentation of Token of Appreciation Phototaking</p>	Auditorium
9:45 - 10:15	Morning Tea Poster Exhibit & Networking Session	2F Foyer
10:15 - 11:15	<p>Keynote Speech by Prof Wolfgang Lutz The Applicability and Intercultural Acceptability of the "Years of Good Life" Indicator in Measuring Sustainable Well-Being Deputy Director General for Science at International Institute for Applied System Analysis Founding Director, Wittgenstein Centre for Demography and Global Human Capital</p>	Auditorium

	<p>Keynote Speech by Dr Sabine Henning Asia and the Pacific at A Crossroads – Challenges and Opportunities of Demographic Change for Inclusive and Sustainable Societies Chief, Sustainable Demographic Transition Section, Social Development Division, United Nations Economic and Social Commission for Asia and the Pacific (UNESCAP)</p>	
11:15 - 11:30	Presentation of Tokens of Appreciation	
11:30 - 11:45	CFPR 10th Anniversary Celebration Cake-cutting Group Phototaking Session	
11:45 - 12:45	Lunch Book Exhibit	<i>2F Foyer</i>
12:45 - 14:15	Parallel Sessions A1	
	A1-1 Active Ageing in Singapore	<i>Auditorium</i>
	A1-2 Gender and Health	<i>Clove</i>
	A1-3 Marriage and Fertility	<i>Lemongrass</i>
	A1-4 Migration and SES Differences	<i>Basil</i>
	A1-5 Innovative Methods in Population Research	<i>Lavender</i>
14:15 - 14:30	<i>Break</i>	<i>2F Foyer</i>
14:30 - 16:00	Parallel Sessions A2	
	A2-1 Children, Youth, and Health	<i>Auditorium</i>
	A2-2 Family Policies in Singapore	<i>Clove</i>
	A2-3 Impact of COVID-19	<i>Lemongrass</i>
	A2-4 Marital Dissolution and Its Consequences	<i>Basil</i>
	A2-5 Health and Support in Late Adulthood	<i>Lavender</i>
16:00 - 16:15	Afternoon Tea Book Exhibit	<i>2F Foyer</i>

16:15 - 17:45	Parallel Sessions A3	
	A3-1 Ageing and Family	<i>Auditorium</i>
	A3-2 Gender Inequalities	<i>Clove</i>
	A3-3 Linked Lives	<i>Lemongrass</i>
	A3-4 Special Panel: 30 Years of ICPD in China	<i>Basil</i>
	A3-5 Fertility Transitions in Asia	<i>Lavender</i>
17:45 - 18:30	Movement to The Scholar Chinese Restaurant	
18:30 - 20:30	Networking Dinner (<i>Registered Participants Only</i>)	<i>The Scholar Chinese Restaurant</i>

Day 2: Friday, 17 May 2024

Time	Details	Venue
8:00 - 9:00	Book Exhibit	2F Foyer
9:00 - 10:30	<p>Plenary Session - Singapore's Population and Family Development: Insights from CFPR-Led Research</p> <p>- Highlights of Singapore Longitudinal Early Development Study (SG-LEADS) Prof Wei-Jun Jean Yeung</p> <p>- Gender Inequality and Subjective Well-Being Amongst Professional Women in East and Southeast Asia: A Study of Eight Societies A/Prof Vincent Chua</p> <p>- Lifelong Education for Aging Productively (LEAP) in Singapore A/Prof Feng Qiushi</p> <p>- Childless Aging in Singapore A/Prof Bussarawan Teerawichitchainan</p> <p>- Q&A Moderator: Dr Kriti Vikram, CFPR Co-Deputy Director</p>	Auditorium
10:30 - 10:45	Morning Tea	2F Foyer
10:45 - 12:15	Parallel Sessions B1	
	B1-1 Ageing in Singapore: Models and Theories	Clove
	B1-2 Environment, Disaster and Health	Lemongrass
	B1-3 Family Inequalities	Basil
	B1-4 Households, Early Life and Culture	Lavender
12:15 - 13:15	Lunch Book Exhibit	2F Foyer

13:15 - 14:15	Annual General Meeting - Annual PAS Reports & Updates - Best Student Paper Award - Early Career Award Presidential Address <i>A Comparative Research on Living Alone and Mental Well-being among Older Adults in Korea and Denmark</i> Prof Wei-Jun Jean Yeung	<i>Auditorium</i>
14:15 - 14:30	<i>Break</i>	<i>2F Foyer</i>
14:30 - 16:15	Plenary Session - Tsao Foundation Symposium: Issues of Women as They Grow Older - <i>Singapore's Shadow Report to 6th Periodic Review of Convention on the Elimination of all forms of Discrimination Against Women (CEDAW)</i> Dr Supriti Bezbaruah - <i>Older Women and Financial Security</i> Ms Susana Concorde Harding - <i>Older Women & Health</i> Dr Preeti H. Wasnik - <i>Panel Discussion + Q&A</i> Moderator: Dr Aw Su Closing Remarks Lucky Draw	<i>Auditorium</i>
16:15 - 16:30	<i>Break</i>	<i>2F Foyer</i>
16:30 - 18:00	Parallel Sessions B2	
	B2-1 Activity and Contributions at Old Age	<i>Auditorium</i>
	B2-2 Child Health and Development	<i>Clove</i>
	B2-3 Gender and Reproductive Health	<i>Lemongrass</i>
	B2-4 Kinship and Intergenerational Relations	<i>Basil</i>
	B2-5 Migration Intention and Decision	<i>Lavender</i>
End of Conference		

PARALLEL SESSIONS

Day 1: Thursday, 16 May 2024

A1 Parallel Sessions: 12:45 - 14:15		
Session Title	Paper Title	Speakers/ Authors
A1-1 Active Ageing in Singapore	Inequalities in Older Adults' Lifelong Learning: How Socio-Economic Status Shapes Participation and Benefits	Shu Yee Chin*, Jolin Chua Yi Xin, Nathan Widjaja, Rahul Malhotra, Shannon Ang
	Discussant: Jeremy Lim-Soh	Personal mastery at older ages is associated with higher health expectancy: A longitudinal study from Singapore
	Chair: Bryan Tan	Elderly Learning Pathways in Singapore: A Latent Class Analysis study
	Venue: Auditorium	Ideal Later Life in Singapore: The Lay Choice over the Activity, Disengagement and Continuity Theories
A1-2 Gender and Health	Gender Differences in Adolescent Sexual Knowledge, Attitudes, and Behaviours in Vocational High Schools in China: at Baseline and at Change after a Year	Chen Minne*
	Discussant: Yang Zhang	Education and Non-Communicable Diseases in India: An Exploration of Gendered Heterogeneous Relationship
	Chair: Yanwen Wang	The Health Toll of Sexual Harassment on Women and Girls in India: Evidence from a Nationally Representative Panel Survey
Venue: Clove		Kriti Vikram*, Vineeta Sinha
A1-3 Marriage and Fertility	Unlocking the Secrets of Low Fertility in India: A Study of Fertility Preferences a Women's Choice or State Compliance?	Roni Sikdar*, Dhananjay W. Bansode
	Discussant: Cheng Cheng	Time Period and Birth Cohort Differences on the Marriage and Childbearing in China, 1982-2022
		Yanhui Zou*, Hongyan Liu

Chair: Mengni Chen	Differences in Modern Marriage Concepts between Chinese Men and Women during the Second Population Transition: Index Construction and Empirical Results	Zhili Wang*
Venue: Lemongrass	The Change in Fertility Intention of Chinese Women	Yu Jiang*, Hongyan Liu
A1-4 Migration and SES Differences	Parental Socioeconomic Disparities and Child Survival Rates in China: A Closer Look at Rural-oriented Migration	Xinyan (Joyce) Cao*
Discussant: Vincent Chua	Economic Effects of Internal Migration on Receiving Prefectures in Japan: From a Labor Productivity Perspective	Xiaofei Wang*
Chair: Nopphawan Photphisutthiphong	Hukou Reforms, Migration and Urbanization in China	C. Cindy Fan*
Venue: Basil	Neighborhood Satisfaction in Shanghai: Native-migrant difference and the effects of urban service mix and accessibility	Chi Zhang*
A1-5 Innovative Methods in Population Research	The nexus between maternal antenatal care attendance, newborn postnatal care and neonatal mortality in India: a matched case-control study	Wahengbam Bigyananda Meitei*, Abhishek Singh
Discussant: Pildoo Sung	A Comparison of Life Entropy in India v/s USA : An Exploration of Shannon Fractionalization Indices	Ajay Kumar*, Suryakant Yadav, Chandan Kumar, Solveig Argeseanu Cunningham, Perianayagam Arokiasamy, Dilip Thandassery Ramachandran
Chair: Wei Chen	Modelling municipal solid waste generation in Macau: A synthetic approach	Qing Lan*, Haonan Guo, Tianji Cai
Venue: Lavender	How ageing population affects healthcare expenditure in India? A Bayesian VAR analysis	Javed Alam*
	Evaluating the multidimensional nature of psychosocial functioning and its predictors using latent class analysis (LCA) among Indian adults	Neha Shri*, Saurabh Singh

A2 Parallel Sessions: 14:30 - 16:00

Session Title	Paper Title	Speakers/ Authors
A2-1 Children, Youth, and Health	Work-Schedule Instability and Workers' Health and Wellbeing in China	Ya Guo*
	Temporal Windows and Trauma of Time: Examining the Long-Term Mental Health Impact of Childhood Father Absence Experience	Qixin Cai*
	Temporal Changes in Health and Health Inequity in China from 2008 to 2021: An Age-Period-Cohort Analysis	Siyuan Liu*
Discussant: Kriti Vikram		
Chair: Manting Chen		
Venue: Auditorium		
A2-2 Family Policies in Singapore	Understanding the Association between Marriage and Fertility Intentions: A Comparative Quasi-Experimental Study in Hong Kong, Taiwan, and Singapore	Zheng Mu*, Adam Ka-Lok Cheung, Lake Lui
	Types and intersections of economic and family instability among low-income single-parent households in Singapore: An exploratory study	Jennifer Koh*, Jin Yao Kwan, Stella Teo, Ning Chai
	Family leave-taking behavior and its impact on family dynamics in Singapore	Nanxun Li*, Wei-Jun Jean Yeung
	Material Precarity in Highly-Skilled Binational Families in Singapore	Kalpna Vignehsa*, Ruby Thiagarajan
Discussant: Mathew Mathews		
Chair: Ha-Linh Quach		
Venue: Clove		
A2-3 Impact of COVID-19	The impact of teleworking on well-being among working women: Evidence from panel data from Singapore	Jeremy Lim-Soh*, Jolene Tan, Poh Lin Tan
	Revisiting Time availability and Time Use: Evidence from the COVID-19 Lockdown in Singapore	Poh Lin Tan*, Emma Zang, Zitong Wang
	Navigating Health Dynamics: Communicable Diseases and Gig Workers in Urban Contexts	Pooja Kalbalia*, Chandan Roy
	Navigating Immobilities: Spatio-Temporality of Cross-Border Familyhood Before and During the COVID-19 Pandemic	Tuen Yi (Jenny) Chiu*, Ruby YS Lai
Discussant: Senhu Wang		
Chair: Tetiana Dovbischuk		
Venue: Lemongrass		

A2-4 Marital Dissolution and Its Consequences	Marital Dissolution in India: Patterns and Correlates	Harihar Sahoo*, Manas Ranjan Pradhan, Manoj Alagarajan, Madhurima Sharma, Sunandita Das
Discussant: Adam Cheung	How do masculine norms shape the experiences and challenges of single fathers in Singapore?	Shantini Rajasingam*
Chair: Xinyi Chen	Divorce in Asia	Premchand Dommaraju*, Shu Hu
Venue: Basil	Stepfamily Living: What Hurts, What Helps	Nabilah Mohammad*, Charlene Fu, Justin Lee
A2-5 Health and Support in Late Adulthood	Measuring the Risk of Multimorbidity in India	Ajay Kumar*, Suryakant Yadav
Discussant: Abhijit Visaria	The Influence of Gender Equality on Aged Parents' Support in Japan	Nobutaka Fukuda*
Chair: Shannon Ang	Oral Health, Social Engagement, Health Satisfaction, and Depressive Symptoms among Older Adults	Pildoo Sung*
Venue: Lavender	Longitudinal Trajectories of Caregiving Burden and Benefits among Informal Caregivers of Older Adults: A Systematic Review	Yongjing Ping*, Wei Zhong, Jeremy Lim, Truls Ostbye, Rahul Malhotra
	Young adult children's family formation transitions and intergenerational exchange with parents in China	Jinhan Liu*

A3 Parallel Sessions: 16:15 - 17:45

Session Title	Paper Title	Speakers/ Authors
A3-1 Ageing and Family	Projecting Work-Life Trajectories and Retirement Expectations at Age 50: Estimates for Germany	Linda Vecgaile*
Discussant: Bussarawan Teerawichitchainan	Loneliness in the Very Old Mexican American Immigrants: How do Acculturation and Intergenerational Ties Matter?	Jeung Hyun Kim*
Chair: Shu Yee Chin	Financial Stability Among Bereaved Women in South Korea: A Study of Within-Family Transfers, Income, and Pensions	Christine Mair*, Dahye Kim, Jeremy Lim-Soh
Venue: Auditorium	Gendered Strategic Family Responses: Health Shocks and Intergenerational Relationships in Multi-child Chinese Families	Yang Zhang*, Jiaowei Gong, Tianrong Tang, Ting Li
A3-2 Gender Inequalities	Stereotypes and Inequality: Students' Experience with Sex Education by Sex and Geographical Location in Vocational High Schools in China	Chen Minne*
Discussant: Hu Shu	Gender Differences in STEM Persistence: The Role of Grade Growth and Biased Assessments of Brilliance	Siqi Han*, Claudia Buchmann
Chair: Nobutaka Fukuda	Exploring Educational Expenditure: The Role of Socioeconomic Differences and Child's Gender	Nopphawan Photphisutthiphong*, Pataporn Sukontamarn
Venue: Clove	Integration of Female Marriage Migrants with Young Children in Singapore	Shuya Lu*, Wei-Jun Jean Yeung
A3-3 Linked Lives	Parental Involvement and Marital Outcomes: A Comparative Analysis of China and Japan	Manting Chen*, Paul Yip
Discussant: Mu Zheng	Linked Lives: An Extended Dyadic Perspective on Income Trajectories in China	Cheng Cheng*, Yang Zhou
Chair: Shantini Rajasingam	Natal Families' Influence on Work-family Conflicts of Wives in urban China	Menghan Zhao*, Yang Zhang
Venue: Lemongrass	The future is yours, mine and ours: Exploring parents' and adolescents' hope and aspirations in low-income single-parent households in Singapore	Ning Chai*, Jin Yao Kwan, Jennifer Koh, Stella Teo

A3-4 Special Panel: 30 Years of ICPD in China	Achievements of China in Implementing ICPD	Wei Chen*, Hao Zhou, Jinju Liu, Yuanyuan Duan
Discussant: Qiushi Feng	Poverty Alleviation and Rural Revitalization in China since 1994	Gang Zhang*
Chair: Qiushi Feng	Support Policy on Family Development in China since 1994	Wang Hui*
Venue: Basil	A Fairer, Healthier and Safer Environment - Public Service, Ecological Protection and Disaster Reduction Policy in China Since 1994	Yi Shi*
A3-5 Fertility Transitions in Asia	Catalyzing Informed Family Planning: Empowering Juang Women in India	Prasanna Kumar Mudi*
Discussant: Poh Lin Tan	Disappearing of the two-child norm in Hong Kong over 1997-2022	Mengni Chen*, Muzhi Zhou
Chair: Roni Sikdar	Too far to walk: Transportation Barrier, Maternal and Child Healthcare Services Utilisation and Outcomes in India	Shabnam*
Venue: Lavender	Understanding the 'inverted-U shaped' relationship of agricultural land use change and fertility transition in districts of India, 1961-2011	Arjun Jana*

Day 2: Friday, 17 May 2024

B1 Parallel Sessions: 10:45 - 12:15		
Session Title	Paper Title	Speakers/ Authors
B1-1 Ageing in Singapore: Models and Theories	Impact of caregiving demands and caregiver-care recipient relationship on the caregiving experience of informal caregivers of older adults	Ha Linh Quach*, Jeremy Lim-Soh, Nur Diyana Bte Azman, Rahul Malhotra
	Discussant: Premchand Dommaraju	“I (Am) Scared I Will Hurt Him and Then I Will Regret It Forever”: Caregiver Perspectives on Elder Abuse Risk in Singapore
	Chair: Tuen Yi (Jenny) Chiu	Two paths to Community Care for Older Adults: Comparing Korea and Singapore’s Long-Term Care Evolution
	Venue: Clove	Comparison of loneliness and social network between older adult informal caregivers and non-caregivers in Singapore
B1-2 Environment, Disaster and Health	Moving to the Green? The Importance of Private, Semi-Private and Neighborhood Green Spaces in Residential Relocations across the Life Course	Tetiana Dovbischuk*, Stefanie Kley
	Discussant: Rahul Malhotra	Gendered Impact of Climate Variability on Rice Farming in India: A Systematic Review and Meta-Analysis of Literature
	Chair: Rahul Malhotra	Early-Life War Exposure and Risky Health Behaviors in Late Adulthood: Exploring the Roles of Social Networks Among Vietnamese Men
	Venue: Lemongrass	Birth order, early-life war exposure and health outcome for Older Vietnamese war survivors
B1-3 Family Inequalities	Examining the Role of Modernization and Urbanization in Family Changes in India: Evidence from Panel Data Analyses	Tapas Dey*
	Discussant: Mengni Chen	Educational Mobility and Subjective Well-Being from an Intergenerational Perspective
	Chair: Shuya Lu	Untangling social capital: Exploring factors influencing the activation of social capital
		Stella Teo*, Jin Yao Kwan, Jennifer Koh, Ning Chai

	among low-income single-parent families in Singapore	
Venue: Basil	Has it become easier or harder to be homeowners in urban China? The divergence of two types of homeownership rates since 2008	Ling Zhu*, Runhui Tian
B1-4 Households, Early Life and Culture Discussant: Menghan Zhao	The Lasting Impact of Early Life Experience—Kindergarten Enrollment and Children’s Development in Cognitive and Non-Cognitive Skills in China	Mengdi Shi*, Airan Liu
Chair: Guo Ya	The Impact of Historical Heritage on Social Integration: Evidence from Shanghai	Yuxuan Hu*
Venue: Lavender	Temporal-Spatial Patterns of One-Person Households: 2000-2020	Jie Hua*, Ting Li

B2 Parallel Sessions: 16:30-18:00

Session Title	Paper Title	Speakers/ Authors
B2-1 Activity and Contributions at Old Age	How helping you helps me: A longitudinal analysis of volunteering and pathways to quality of life among older adults in Singapore	Shannon Ang*, Rahul Malhotra
Discussant: Christine Mair	Exploring Rural-Urban Differences in the Association between Internet Use and Cognitive Functioning among Older Adults in China	Xinfang Yu*, Shannon Ang, Yang Zhang
Chair: Timothy Low	Strategic Bequest Motive: Evidence from India and Korea	Shweta Kalla Baxi*, Sarthak Gaurav, Usha Ananthakumar
Venue: Auditorium	Transitioning into Older Adulthood in China: health outcomes of work, caregiving, and the combined double burden	Xinyi Chen*
B2-2 Child Health and Development	Age-specific Decomposition of the Change in Under-five Mortality in India, 1998-2021	Wahengbam Bigyananda Meitei*, Abhishek Singh
Discussant: Siqi Han	The Effects of Foreign Teachers on Students' Non-Academic Outcomes	Kelvin KC Seah*, Caleb Ong
Chair: Mo Yan	Under-five Mortality Transition in India between 1993 and 2021: A Gender Perspective	Avnish Pal*
Venue: Clove	An epidemiological paradox in Singapore: low-birth-weight births among marriage migrants	Shuya Lu*
B2-3 Gender and Reproductive Health	Determinants of husband's engagement in family planning as partner: Evidence from a district-level study in Uttar Pradesh, India	Sanjiv Singh*, Arupendra Mozumdar, Kaushalendra Kumar Singh, Puneet Mishra
Discussant: Minne Chen	Investigating the Interviewer's Impact on the Reporting Discrepancies of Pre-Marital Sexual Relationships in India: A Gender Perspective of NFHS Data Quality	Saurabh Singh*
Chair: Jinhan Liu	A Life Course Approach to the Study of Psychosocial and Reproductive Stress on the Risk of Premature and Early Menopause in India	Kriti Vikram*, Sampurna Kundu
Venue: Lemongrass		

B2-4 Kinship and Intergenerational Relations	Women's Coalition: the Practice of Gendered Intergenerational Co-parenting in China	Manting Chen*, Yixi Wu
Discussant: Ling Zhu	Trends and patterns of family structure in India: A perspective of three decades	Sourav Mondal*, Manas Ranjan Pradhan
Chair: Yuanying Liu	Women's Empowerment in Matrilineal and Patrilineal Tribal Families: Evidence from Northeast India	Piyasa Mal*, Nandita Saikia
Venue: Basil	The Demography of Only Children in Contemporary China	Yingyi Lin*
B2-5 Migration Intention and Decision	Migration Intentions in a Politically Divided Context: The Interactive Roles of Affective Polarization and Dyadic Political Attitudes	Adam Cheung*, Lake Lui
Discussant: C. Cindy Fan	Attach or Not Attach: Understanding Later-Life Return Migration Intention through Multiple Place Attachment	Karen Ka Han Li*, Lucy P. Jordan
Chair: Nanxun Li	Effects of Co-Ethnic Networks on Impoverished Ethnic Minority's Migration Decision	Xinhong Fu*
Venue: Lavender	Impact of International Migration on Health Expenditure and the Choice of Access to Healthcare Services in Tamil Nadu, India	Valatheeswaran Chinnakkannu*

ADMINISTRATIVE INFORMATION

Conference Materials

A PAS lanyard and name badge will be provided to all conference participants upon registration. The name badge must be worn at all times during the conference.

As part of our efforts to reduce waste, we encourage you to return the lanyards and badges to PAS at the end of the conference.

Internet Connection

Connecting to the NUS WIFI Network (available only from 16-17 May)

1. Connect to "NUS_Guest" wireless network
2. Select "Event Login" at the login page on your browser
3. Enter the Wi-Fi PIN: **ALSNE1**

Networking Dinner

The networking dinner is scheduled on **Thursday, 17 May 2024 (Day 1)**. Venue is at [*The Scholar Chinese Restaurant – 9 Kent Ridge Dr, Singapore 119241.*](#)

Registered dinner participants may head to the restaurant which is conveniently located in the Kent Ridge Guild House building, right beside the Shaw Foundation Alumni House. Head inside to find *the The Scholar Chinese Restaurant*.

Please bring along your nametags for entry.

We will not be accepting on-the-spot registrations for the networking dinner.

Public Transport Directions from Networking Dinner Venue

Participants should arrange for their own transport back to their lodgings by either taking taxi or public transit.

To Kent Ridge MRT Station - NUS Internal Bus Shuttle

Walk along Kent Ridge Drive to the bus stop 3. *AS5*. Board NUS Internal Bus Shuttle **A1**. Alight **4** stops later at bus stop 7. *KR MRT*. Walk to the Kent Ridge MRT Station (Exit A).

[Shuttle A1 Route Map](#)

To Haw Par Villa Station – Bus

Exit the restaurant venue. Turn left and walk along Kent Ridge Drive. Turn right at Heng Mui Keng Terrace and walk along until you reach Pasir Panjang Road. Turn left to see Bus Stop B16069. Take any of the following buses (10, 30, 51, 143, 200). Alight **5** stops later at Bus Stop B16019. Walk to Haw Par Villa MRT Station (Exit A).

USEFUL INFORMATION

Public Transport

Visitors may travel around Singapore via buses, trains, and taxis.

Visitors can use the following payment options for MRT or bus¹ journeys:

1. Get a Singapore Tourist Pass (STP), a special EZ-Link stored-value card which will allow you unlimited travel for one, two or three days. The Pass can be bought at the SimplyGo Ticket Office at selected MRT stations listed [here](#).
2. Adult Stored-Value Smartcard (EZ-Link / NETS FlashPay): These cost \$10 and come with a stored value of \$5 for you to use on your commutes. You'll be able to purchase these at Passenger Service Centres in train stations, any [SimplyGo Ticket Office](#) or convenience stores such as 7-11, Buzz and Cheers.
3. You can use your foreign-issued Mastercard® and Visa contactless bank cards², as well as your mobile wallets for the payment of public transport fares in Singapore. No registration is required.

¹Remember to tap in and out on the reader located at the front and rear exits of the bus when you board and alight respectively.

²Admin fees apply for foreign-issued bank cards.

Taxis or ride-hailing apps

Taxis here are metered, but there may be surcharges depending on when, where and which company's taxi you board. You can hail a taxi by the roadside at most places, or by queuing for one at a taxi stand, which you'll find at most malls, hotels, and attractions. You may pay with cash, credit card, NETS, or CEPAS stored-value cards, subject to the availability of such payment devices in the taxis. Cashless payment charges may apply.

TIP: Always ask the taxi driver at the beginning of the journey if you have any queries about the mode of payment, or if they have change for large notes.

Alternatively, you may use one of the ride-hailing applications available: [Grab](#), [Gojek](#), [Ryde](#) and [TADA](#).

For more information about the Singapore public transport system including hours of operation for train and bus networks: <http://www.lta.gov.sg/content/ltaweb/en.html>

Directions to Shaw Foundation Alumni House (Maps on Page 4, 5, 6)

Shaw Foundation Alumni House Address: 11 Kent Ridge Dr, Singapore 119244

**A gentle note to not confuse the Shaw Foundation Alumni House with its neighbouring building (Kent Ridge Guild House).*

Taxi/ Ride-Hailing Apps

Shaw Foundation Alumni House is located within the NUS Kent Ridge Campus.

You may provide the venue's postal code: 119244 to your driver.

By NUS Internal Bus Shuttle

Alight at Kent Ridge MRT station and walk towards Exit A. Take a right turn at the first junction. Walk straight through the pedestrian tunnel. Walk to Opposite Kent Ridge Station (18339), also known as 8. *Opp KR MRT* (seen on linked route map). Board NUS Internal Bus Shuttle **A2**. Alight **4** stops later at bus stop *12. Opp NUSS*. Cross the road and walk back 100m down and you will see Shaw Foundation Alumni House on your left. Follow map directions on Page 4 & 5 to the conference venue.

[Shuttle A2 Route Map](#)

By Public Bus

From Haw Par Villa MRT station

Take Exit A from the station and walk towards the bus stop opposite the station (Bus Stop No B16011). Take any bus services (non-express) from bus stop B16011 opposite Har Paw Villa MRT. Alight at the fifth bus stop (Opposite Heng Mui Keng Terrace, B16061 – along Pasir Panjang Road). Cross the road and walk down the Heng Mui Keng Terrace stretch and keep left. Turn left to Kent Ridge Drive and up the slope of 100m and you will see Shaw Foundation Alumni House on your right.

Public Transport Directions from Shaw Foundation Alumni House

To Kent Ridge MRT Station - NUS Internal Bus Shuttle

Walk along Kent Ridge Drive to the bus stop 3. AS5. Board NUS Internal Bus Shuttle **A1**. Alight **4** stops later at bus stop 7. *KR MRT*. Walk to the Kent Ridge MRT Station (Exit A).

[Shuttle A1 Route Map](#)

To Haw Par Villa Station – Bus

Exit the restaurant venue. Turn left and walk along Kent Ridge Drive. Turn right at Heng Mui Keng Terrace and walk along until you reach Pasir Panjang Road. Turn left to see Bus Stop B16069. Take any of the following buses (10, 30, 51, 143, 200). Alight **5** stops later at Bus Stop B16019. Walk to Haw Par Villa MRT Station (Exit A).

Driving to Shaw Foundation Alumni House - Parking

If you are driving to the venue, you may wish to park at Carpark 15.

Emergency Numbers

999	Police Emergency
995	Medical Emergency / Fire Engine
1777	Non-emergency Ambulance

PARTICIPANT INDEX

A

Abhijit Visaria.....	14, 17, 20
Adam Cheung	17, 23
Ajay Kumar	15, 17
Arjun Jana	19
Avnish Pal	22
Aw Su.....	13

B

Bryan Tan.....	14
Bussarawan Teerawichitchainan ...	8, 9, 12, 18, 20

C

C. Cindy Fan	15, 23
Chen Minne	14, 18
Cheng Cheng.....	14, 18
Chi Zhang	15
Christine Mair	18, 22

G

Gang Zhang.....	19
-----------------	----

H

Ha Linh Quach.....	20
Harihar Sahoo	17

I

Ingrid Wilson.....	20
--------------------	----

J

Javed Alam.....	15
Jennifer Koh.....	16, 18, 20
Jeremy Lim-Soh	14, 16, 18, 20

Jeung Hyun Kim	18
Jhumki Kundu	14
Jie Hua	21
Jinhan Liu*	17
Joanne Yoong	13

K

Kalpana Vignehsa	16
Karen Ka Han Li.....	23
Kelvin KC Seah	22
Kheng Chuan Tan.....	20
Kriti Vikram.....	12, 14, 16, 22

L

Linda Vecgaile.....	18
Ling Zhu	21, 23

M

Manting Chen	16, 18, 23
Mengdi Shi.....	21
Menghan Zhao.....	18, 21
Mengni Chen	15, 19, 20

N

Nabilah Mohammad.....	17
Nanxun Li.....	16, 23
Neha Shri	15
Ning Chai	16, 18, 20
Nobutaka Fukuda	17, 18
Noppawan Photphisutthiphong	15, 18

P

Paul Ong	13
Pildoo Sung	15, 17
Piyasa Mal.....	23
Poh Lin Tan	16, 19

Pooja Kalbalia	16
Poushaly Talukdar.....	20
Prasanna Kumar Mudi	19
Premchand Dommaraju.....	17, 20

Q

Qing Lan.....	15
Qiushi Feng.....	8, 14, 19
Qixin Cai.....	16

R

Rahul Malhotra	14, 17, 20, 22
Roni Sikdar	14, 19

S

Sabine Henning.....	3, 10
Sanjiv Singh.....	22
Saurabh Singh	15, 22
Shabnam.....	19
Shannon Ang.....	14, 17, 22
Shantini Rajasingam	17, 18
Shu Yee Chin	14, 18
Shuya Lu	18, 20, 22
Shweta Kalla Baxi.....	22
Siqi Han	18, 22
Siyuan Liu.....	16
Sourav Mondal	23
Stella Teo	16, 18, 20
Supriti Bezbaruah	13

T

Tapas Dey	20
Tetiana Dovbischuk	16, 20
Timothy Low	20, 22
Ting Yong	20
Tuen Yi (Jenny) Chiu	16, 20

V

Valatheeswaran Chinnakkannu	23
Vincent Chua	8, 12, 15

W

Wahengbam Bigyananda Meitei	15, 22
Wang Hui.....	19
Wei Chen	15, 19
Wei-Jun Jean Yeung.....	8, 9, 12, 13, 16, 18
Wolfgang Lutz.....	2, 9

X

Xiaofei Wang	15
Xinfang Yu.....	22
Xinhong Fu.....	23
Xinyan (Joyce) Cao.....	15
Xinyi Chen	17, 22

Y

Ya Guo	16
Yang Zhang	14, 18, 22
Yanhui Zou.....	14
Yanwen Wang.....	14, 20
Yi Shi	19
Yingyi Lin.....	23
Yongjing Ping	17
Yu Jiang.....	15
Yuanying Liu.....	14, 23
Yuxuan Hu	21

Z

Zheng Mu	16
Zhili Wang.....	15

PAS

Population Association of Singapore

Our Mission

The PAS mission is to promote the scientific study of the population, encourage exchange between researchers, and stimulate interest in population issues in Singapore and Asia.

Our Objectives

To provide a platform for intellectual exchange in population studies among researchers, academics and all interested parties

To facilitate scientific research on population

To encourage, facilitate and support research projects relating to the study of population in Singapore and Asia

Our Activities

Engage in the exchange of knowledge through preparing, publishing and disseminating periodicals, pamphlets, photos, articles and illustrations as well as produce such films, videos and recordings in whatever form, electronic or otherwise, as may be necessary or relevant to educate its members and the public

Participate in and organise forums, talks, seminars, and other events to help advance population research among members and public education on population issues.

Donate to PAS

We encourage you to get involved and help us:

- Support more students to pursue population studies
- Sponsor public events or international conferences to share findings
- Sponsor awards for scientific and policy-relevant research on population issues
- Support administrative and operational staff for PAS
- Facilitate exchange and discussion among researchers and interested stakeholders
- Invite regional and international speakers
- Communicate to a wider audience with scientific findings on population issues to raise awareness



www.sgpopulation.org/donate

 www.sgpopulation.org  contactus@SGpopulation.org

   [@SGpopulation](https://www.youtube.com/@SGpopulation)  [linkedin.com/company/sgpopulation](https://www.linkedin.com/company/sgpopulation)